



JABAMA

ESD EQUIPMENT

Tables, trolleys and furniture
for EPA zones



19 years
of experience



100% Polish
manufacturer



Compliance with
PN-EN 61340-5-1

Contents

About JABAMA	3
Comprehensive ESD protection	5
Premium workstation features	8
Assembly workbenches	9
SM ESD fixed-height benches	9
SMR ESD manually height-adjustable benches	10
SMRE ESD electrically height-adjustable benches	11
Sample bench configurations	13
Modular bench accessories	15
Upper superstructure accessories	15
Under-bench accessories	19
ESD protection accessories	20
Chairs	21
Transport trolleys	22
Tailor-made solutions	24
Gallery of example solutions	25



Experts in professional workstations



Nobody knows industrial workbenches like we do. Since 2007, we have specialized in manufacturing workstation systems, trolleys and other equipment for industry.

ESD benches providing antistatic protection are one of our most important product categories. We have the specialist knowledge and experience that help us design safe and efficient workstations dedicated to working with sensitive electronics at various stages of production: assembly, packing, testing and service. **What makes us stand out?**

19 YEARS OF EXPERIENCE

Over the years, we have completed thousands of projects and built extensive expertise in designing durable, ergonomic and modern industrial solutions.

END-TO-END MANUFACTURING IN POLAND

JABAMA is a 100% Polish company with a skilled team of 50 professionals. We operate a modern production facility near Mińsk Mazowiecki, where every stage of manufacturing is carried out in-house.

OUR OWN ACTUATORS TAILORED TO CUSTOMER NEEDS

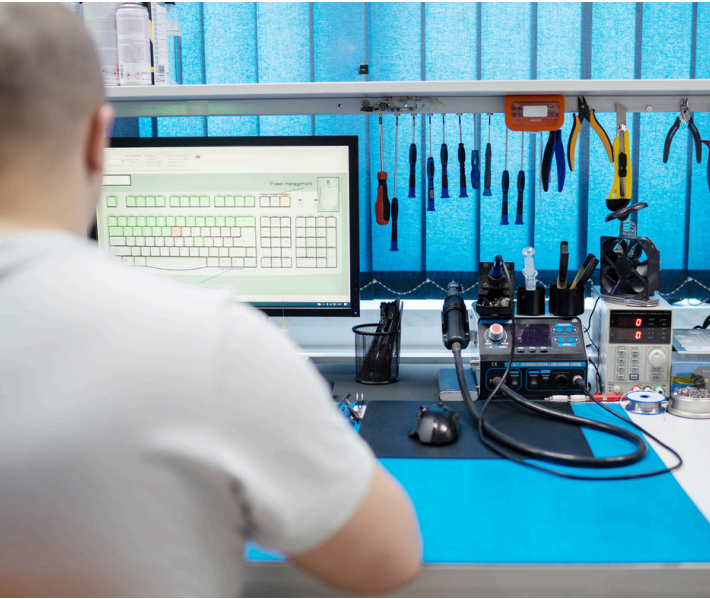
We have designed our own actuators and lifting columns, perfectly suited to the requirements of electric height-adjustable workstations — and we manufacture them ourselves.

CUSTOM PROJECTS: IN-HOUSE DESIGN OFFICE

Our solutions are developed by a team of experienced engineers who know our products inside out and understand how to adapt them to your needs. They also design dedicated projects tailored to specific production processes.



Consulting and design tailored to your needs



Our greatest asset is not only top-class equipment, but also expert knowledge of how well-designed workstation

ecosystems can positively influence business performance. High-quality solutions tailored to specific processes create real value for a company and reduce the total investment cost of new equipment. We are happy to share our know-how with customers: if you need support in selecting the right workstation configurations or planning a production line layout, let us know — we will help. You can write to us, call us or request a free visit from a sales consultant.

I

CONSULTATION

II

DESIGN

III

PRODUCTION

IV

INSTALLATION

V

DELIVERY



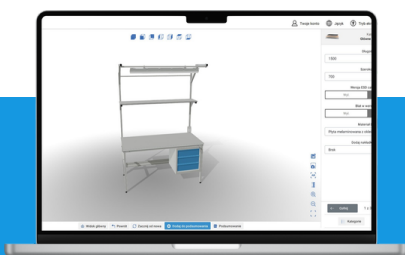
A comprehensive service with delivery

When you buy JABAMA workbenches, you get more than just a product. You also receive a tailored design developed after consultation and matched to your needs. We also handle installation and delivery of the ordered solutions, so you receive a complete service package.



3-year warranty and professional service

Our products are covered by a three-year warranty, allowing you to use them reliably for many years. If our products ever require service, spare parts or expansion, our service team will take care of it — spare parts remain available many years after the original purchase.



**TRY THE 3D
WORKBENCH
CONFIGURATOR**

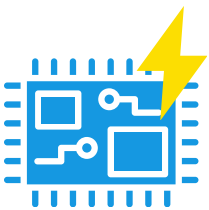


Comprehensive ESD antistatic protection



In the electronics industry, special protection against electrostatic discharge (ESD) is required because it can negatively affect sensitive components.

What is ESD and what damage can it cause?



ESD (*Electrostatic Discharge*) is a sudden flow of electrical charge between two objects with different electric potentials. For the electronics industry, it is the "silent killer" of electronic components. ESD events cannot be heard or seen, yet they can easily damage integrated circuits, causing **immediate failures** or **latent defects** that later result in malfunctions for end users and generate warranty and service costs.

ESD protection should cover every stage of the process: **production, testing, packing, storage, transport and service.**

Certified compliance with IEC 61340-5-1

Safe ESD protection standards are defined by international regulations such as **IEC 61340-5-1**. JABAMA ESD workstations have been tested by the Łukasiewicz Research Network – Institute of Industrial Organic Chemistry, which issued a statement confirming full compliance with this standard.



EPA zone: an integrated ESD protection system

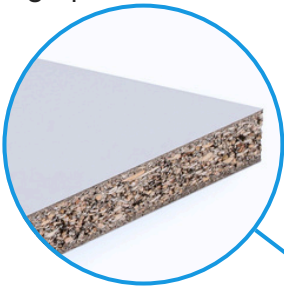
ESD-protected manufacturing is organized in the form of an **EPA** (ESD Protected Area), meaning areas protected against electrostatic discharge, properly designed and equipped with specialist equipment and furnishings such as ESD workstations, flooring, signs, measuring devices and workwear. Protection plans and procedures are implemented in EPA zones to eliminate the risk of ESD damage. To ensure effective protection, comprehensive procedures and high-quality certified equipment should be used.

JABAMA benches: a bastion of ESD protection in the EPA zone

We pay great attention to detail, and when designing our workbenches we use top-grade materials. The steel frame, worktops, feet, accessories, castors and grounding: all components must ensure comprehensive ESD protection, which makes each of our solutions a **strong line** of defense against electrostatic discharge.



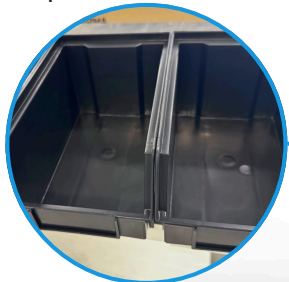
Worktops, shelves and ESD panels with graphite conductive core



Metal components powder-coated with antistatic textured paint



Specialist ESD bins



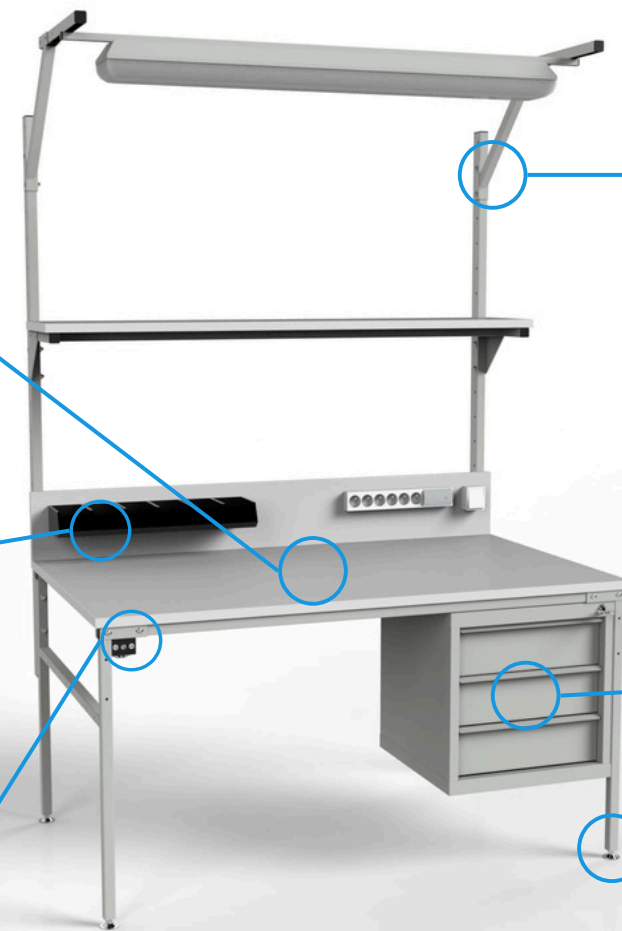
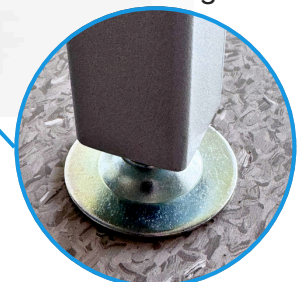
Cabinets and drawer units coated with antistatic paint



Grounding set with cable



Metal leveling feet



Equipment ecosystem for EPA zones



JABAMA offers a wide range of solutions and furniture dedicated to safe operation in EPA zones, including:

- assembly benches / workstations
- ESD table mats
- ESD accessories for grounding personnel
- transport trolleys / mobile workstations
- ESD floor mats

When designing EPA zones, make sure to include proper signage and testing, grounded flooring, specialist ESD furniture and equipment, personnel grounding, and appropriate operating procedures for the EPA zone, such as access control, housekeeping, and correct movement and storage of sensitive electronic components.



The grounding set mounted on each workbench also allows the operator and workstation user to be grounded.

1x 4 mm banana socket

2x 10 mm snap fasteners

1.8 m grounding cord

JABAMA assembly benches with accessories meet the requirements for antistatic protection. Properly measured worktop resistance does not exceed **R_{gp} < 1×10⁹ Ω**.



Ergonomics, modularity and rugged construction

Professional applications require top-class solutions, with attention to durability, material quality, details and finish, ergonomics and work safety. JABAMA designs high-end workbenches that combine all of these features.

Ergonomics

Every workstation should be adjustable to its user. Our benches offer **worktop height adjustment** (manual or electric), **adjustable placement of accessories and lighting**, as well as a high degree of customization, for example through better organization of tools and space for computer equipment.

Modularity

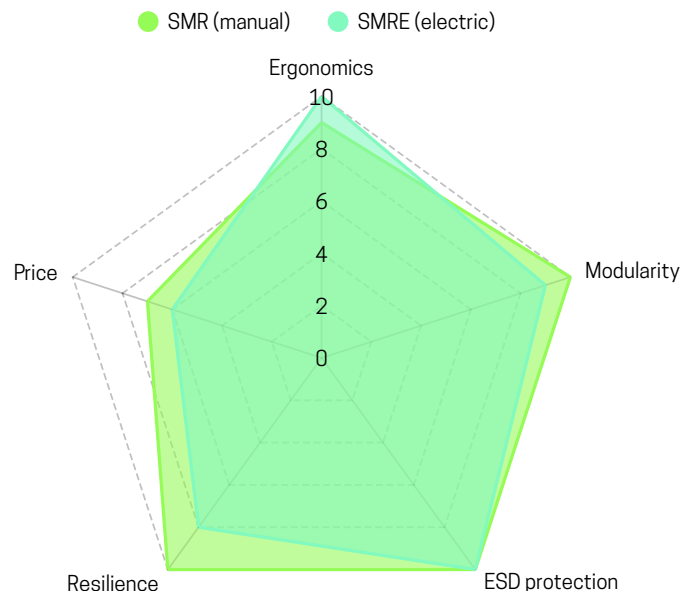
JABAMA workstations are modular platforms that can be easily adapted and reconfigured. We offer many compatible accessories and modules that can be used to create a fully equipped and optimized workstation. We also design custom-made accessories.

Lean / Efficiency

An efficient workstation should be intelligently designed to minimize unnecessary movement, facilitate task organization and support orderliness. Every tool should have its designated place, and unnecessary items should be eliminated. Our benches achieve this, among other things, through dedicated holders and accessories.

Durability

All JABAMA solutions are based on rigid welded and bolted steel-profile structures with high load capacity. We use top-quality steel, conductive worktops and modern antistatic paints. Electric benches are equipped with specially designed industrial-grade lifting columns.



ESD ASSEMBLY WORKBENCHES

Assembly workbenches SM ESD (fixed height)



Versatile basic workstations with an excellent price-to-quality ratio



Technical parameters SM ESD:

- Available in 6 worktop sizes
- Fixed worktop height: **800 mm**
- Load capacity **300 kg** (evenly distributed)
- Frame made of 30x30x3 mm steel profiles
- **25 mm ESD** melamine worktop with 2 mm ABS edging
- **Light grey** colour RAL 7035
- ESD version: textured antistatic paint, ESD worktop with conductive core, grounding kit with 1.8 m cable, metal leveling feet



The ESD melamine worktop is an excellent choice for industrial and laboratory applications



Each SM table can be manufactured in a mobile version on 120 mm castors without reducing the table's load capacity.

Worktop size (L x W mm)	Code
1200x700	SM-ESD-0712
1500x700	SM-ESD-0715
1800x700	SM-ESD-0718
1200x900	SM-ESD-0912
1500x900	SM-ESD-0915
1800x900	SM-ESD-0918



SM and SMRE tables can be supplied in linked series or corner configurations.



Assembly workbenches SMR ESD (manual height adjustment)



Workstations with screw-based height adjustment – a universal assembly bench for production, testing and electronics service

Technical parameters SMR ESD:

- Available in 6 worktop sizes
- Worktop height adjustment: 750–1150 mm on four screws
- Load capacity **300 kg** (evenly distributed)
- Frame made of 30x30x3 mm steel profiles
- **25 mm ESD** melamine worktop with 2 mm ABS edging
- **Light grey** colour RAL 7035
- ESD version: textured antistatic paint, ESD worktop with conductive core, grounding kit with 1.8 m cable, metal leveling feet



The ESD melamine worktop is an excellent choice for industrial and laboratory applications.



Each SMR table can be manufactured in a mobile version on 120 mm castors without reducing the table's load capacity.

Worktop size (L x W mm)	Code
1200x700	SMR-ESD-0712
1500x700	SMR-ESD-0715
1800x700	SMR-ESD-0718
1200x900	SMR-ESD-0912
1500x900	SMR-ESD-0915
1800x900	SMR-ESD-0918



SMR tables offer smooth worktop height adjustment in the range 750–1150 mm and smooth adjustment of upper accessories mounted on portal profiles. This allows you to set any height without being limited by predefined mounting holes – just loosen the screws and set the target height

SMRE ESD assembly workbenches with electric height adjustment



Premium-class workstations with convenient electric height adjustment for users requiring maximum ergonomics



Worktop size (L x W mm)	Code
1200x700	SMR-ESD-0712
1500x700	SMR-ESD-0715
1800x700	SMR-ESD-0718
1200x900	SMR-ESD-0912
1500x900	SMR-ESD-0915
1800x900	SMR-ESD-0918



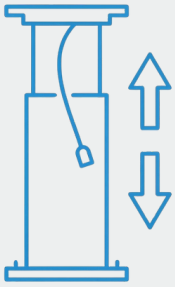
Technical parameters SMRE ESD:

- Available in 6 worktop sizes
- Easy height adjustment on electric lifting columns in the range **680–1070 mm**
- Load capacity **300 kg** (evenly distributed)
- Reinforced frame made of steel profiles
- **25 mm ESD** melamine worktop with 2 mm ABS edging
- Light grey colour RAL 7035
- ESD version: textured antistatic paint, ESD worktop with conductive core, grounding kit with 1.8 m cable, metal leveling feet, spiral grounding cable to the column

Where do electric tables work best?

Everywhere the nature of the job or ergonomics call for them. They enable alternating sit-stand work, reducing strain on the spine. A single station can be shared between several operators in shift work. Electric adjustment also makes it easier to place heavy items on the worktop from floor level. SMRE workstations from JABAMA are premium stations for the most demanding companies.

Polish heart of your workstation:



As one of the few industrial workbench manufacturers in Europe, **we design and produce our own** lifting columns and actuators. This gives us full control over their parameters and perfect alignment with the specifications of SMRE tables. It shortens production lead times and allows us to match their strength and load capacity precisely to industrial conditions.



**Designed and manufactured in Poland
by JABAMA**

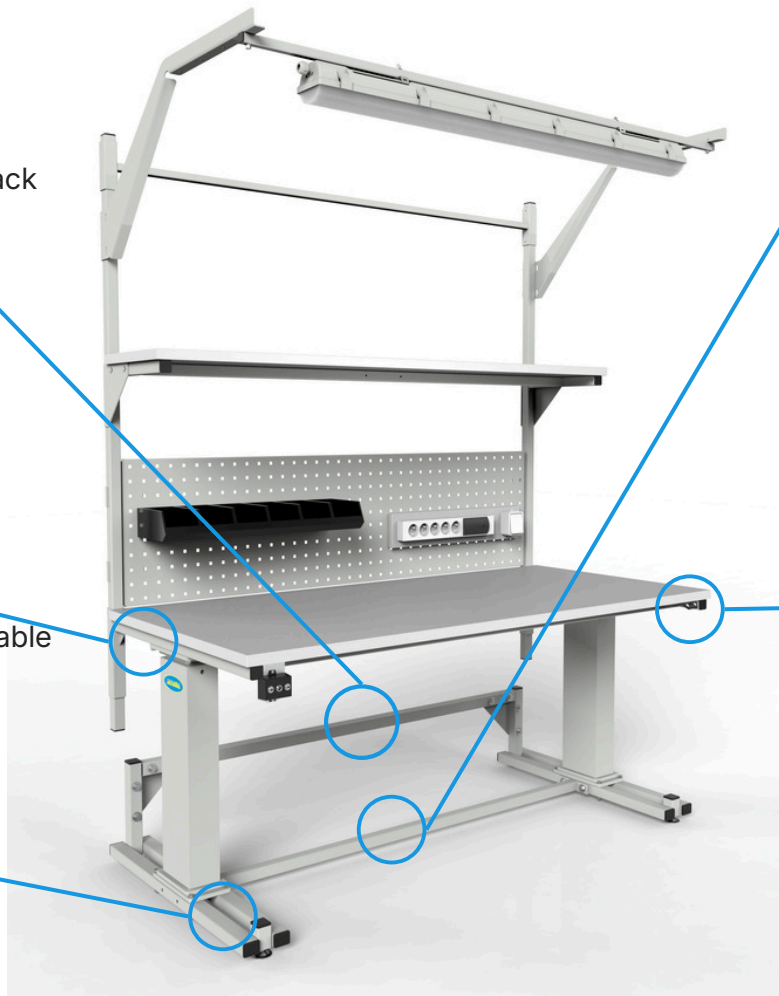
Rigid and reliable SMRE frame

Rear reinforcement protecting the bench from damage at the back



In the ESD version the table is supplied with a spiral cable for grounding

Double reinforced base with leveling feet



Reinforcing crossbeam for extra rigidity



Set of JABAMA columns, handset and controller with power supply

Better quality = lower total cost of ownership!



More reinforcements, more bolted joints, better materials and an electric height-adjustment system. We design our solutions to reduce total cost of ownership through long-term reliable operation, improved ergonomics and better health and satisfaction of users.

Example configurations



Assembly bench SM – configuration SMPCK1-ESD-0715



Element	Description	Code
SM-ESD-0715 bench (base)	1500x700x800 mm	SM-ESD-0715
SM upper supports	mounting holes	KBOC-SM-ESD
Central Loghting LED 27W	27W 4000K	OC27W
Standard SM shelf	1500x300 mm	PSM-ESD-0315
SM rear panel	1500x200 mm	TS-SM-ESD-0215
Small perforated panel	1480x380 mm	KW-ESD-1480-380
LZA5 power strip x2	5 sockets	LZA5
R3-ESD bin set	4 pcs + rail	R3-ESD
K1 drawer unit (3 drawers)	500x500x500 mm	K1-ESD
Keyboard drawer	700x350 mm	SK-ESD
Computer shelf	300 mm	PKOM-ESD

Assembly bench SM – configuration SMPK1-0915



Element	Description	Code
SM-ESD-0915 bench (base)	1500x900x800 mm	SM-ESD-0915
Small SM upper supports	mounting holes	MKBOC-SM-ESD
Standard SM shelf	1500x300 mm	PSM-ESD-0315
SM rear panel	1500x200 mm	TS-SM-ESD-0215
K1 drawer unit (3 drawers)	500x500x500 mm	K1-ESD



Assembly bench SMRE – configuration SMPCK1-ESD-0715



Element	Description	Code
SMRE-ESD-0715 bench (base)	1500x700 mm	SMRE-ESD-0715
SMRE upper supports	portal profile	KBOC-SMRE-ESD
Central LED 27W lighting	27W 4000K	OC27W
Standard SMR shelf	1500x300 mm	PSMR-ESD-0315
Small perforated panel	1480x380 mm	KW-ESD-1480-380
LZA5 power strip	5 sockets	LZA5
R1-ESD bin set	6 pcs + rail	R1-ESD

Example workstation configurations



Assembly bench SMRE – configuration SMR2PCK2-ESD-0715



Element	Description	Code
SMR-ESD-0715 bench (base)	1500x700 mm	SMR-ESD-0715
SMR upper supports	portal profile	KBOC-SMR-ESD
Central LED 27W lighting	27W 4000K	OC27W
Standard SMR shelf x2	1500x300 mm	PSMR-ESD-0315
Small perforated panel	1480x380 mm	KW-ESD-1480-380
LZA5 power strip	5 sockets	LZA5
R1-ESD bin set	6 pcs + rail	R1-ESD
K2 drawer unit (4 drawers)	500x500x500 mm	K2-ESD
Keyboard drawer	700x350 mm	SK-ESD
RM2 monitor arm	260 mm X2	RM2-ESD

Assembly bench SMRE – configuration SMRPK1-0718



Element	Description	Code
SMR-ESD-0718 bench (base)	1800x700 mm	SMR-ESD-0718
Small SMR upper supports	portal profile	MKBOC-SMR-ESD
Standard SMR shelf	1800x300 mm	PSMR-ESD-0318
SMR rear panel	1800x200 mm	TS-SMR-ESD-0218
K1 drawer unit (3 drawers)	500x500x500 mm	K1-ESD
31 W under-shelf LED lighting	31W	OPP31W
Electrical installation	8 sockets	KK-8-1800



Assembly bench SMRE – configuration SMRPCK1-ESD-0918



Element	Description	Code
SMR-ESD-0918 bench (base)	1800x900 mm	SMR-ESD-0918
SMR upper supports	portal profile	KBOC-SMR-ESD
Central LED 27W lighting	27W 4000K	OC27W
SMR rear panel	1800x200 mm	TS-SMR-0218
Standard SMR shelf	1800x300 mm	PSMR-ESD-0318
K1 drawer unit (3 drawers)	500x500x500 mm	K1-ESD

Upper accessories (bench extensions)

Upper frame brackets KBOC



The upper frame is one of the key modules of every type of assembly bench. It is mounted directly to the table base and allows mounting lighting and other upper accessories. In SM tables the frame features mounting holes spaced every 80 mm on thick steel profiles. SMR and SMRE tables use portal-type upper brackets that enable fully smooth adjustment of mounted elements

Element	Description	Code
SM upper supports	profile with mounting holes	KBOC-SM-ESD
SMR upper supports	portal profile	KBOC-SMR-ESD
SMRE upper supports	portal profile	KBOC-SMRE-ESD

Small upper frame supports MKBOC.



Element	Description	Code
Small SM upper supports	profile with mounting holes	MKBOC-SM-ESD
Small SMR upper supports	portal profile	MKBOC-SMR-ESD
Small SMRE upper supports	portal profile	MKBOC-SMRE-ESD



JABAMA bench extensions are solidly mounted to the base frame for increased load capacity and stiffness, eliminating vibrations and wobble. SMR tables have an additional welded profile into which the upper brackets are inserted and bolted.

Upper shelves

Standard upper shelf



Element	Description	Code
Upper shelf PSM-0312	1200x300 mm	PSM-ESD-0312
Upper shelf PSM-0315	1500x300 mm	PSM-ESD-0315
Upper shelf PSM-0318	1800x300 mm	PSM-ESD-0318
Upper shelf PSMR-0312	1200x300 mm	PSMR-ESD-0312
Upper shelf PSMR-0315	1500x300 mm	PSMR-ESD-0315
Upper shelf PSMR-0318	1800x300 mm	PSMR-ESD-0318

Tilting upper shelf



Element	Description	Code
Tilting shelf PUSM-0312	1200x300 mm	PUSM-ESD-0312
Tilting shelf PUSM-0315	1500x300 mm	PUSM-ESD-0315
Tilting shelf PUSM-0318	1800x300 mm	PUSM-ESD-0318
Tilting shelf PUSMR-0312	1200x300 mm	PUSMR-ESD-0312
Tilting shelf PUSMR-0315	1500x300 mm	PUSMR-ESD-0315
Tilting shelf PUSMR-0318	1800x300 mm	PUSMR-ESD-0318

Boom-mounted shelf



Element	Description	Code
Boom-mounted shelf, double arm, fixed angle	300x600 mm	PRM-02-S-ESD-0360
Boom-mounted shelf, double arm, tilting	300x600 mm	PRM-02-U-ESD-0360
Boom-mounted shelf, single arm, fixed angle	300x600 mm	PRM-01-S-ESD-0360
Boom-mounted shelf, single arm, tilting	300x600 mm	PRM-01-U-ESD-0360

Lighting

Central LED 27 W lighting



Element	Description	Code
Central LED 27W lighting	27W, 4000K	OC27W

Under-shelf OPP 31 W lighting



Element	Description	Code
Upper shelf PSM-0312	1200x300 mm	PSM-ESD-0312
Upper shelf PSM-0315	1500x300 mm	PSM-ESD-0315
Upper shelf PSM-0318	1800x300 mm	PSM-ESD-0318
Upper shelf PSMR-0312	1200x300 mm	PSMR-ESD-0312
Upper shelf PSMR-0315	1500x300 mm	PSMR-ESD-0315
Upper shelf PSMR-0318	1800x300 mm	PSMR-ESD-0318

Monitor holders

Monitor holder on articulated arm



Element	Description	Code
Single monitor arm	1 arm	RM-01-ESD
Dual monitor arm	2 arms	RM-02-ESD

Tablet holder on articulated arm



Element	Description	Code
RT-02 tablet holder	double arm	RT-02-ESD

Balancer

Balancer rail with trolley and hook



Element	Description	Code
Balancer guide rail	trolley + holder	B-ESD

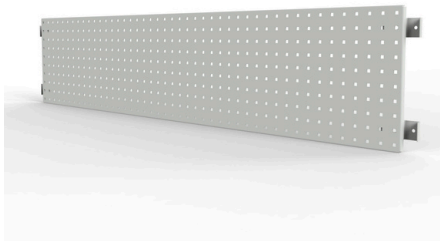
Rear panels

TS rear panel made of board



Element	Description	Code
Rear panel TS-0312	1200x300 mm typ SM	TS-ESD-0312
Rear panel TS-0315	1500x300 mm typ SM	TS-ESD-0315
Rear panel TS-0318	1800x300 mm typ SM	TS-ESD-0318
Rear panel TSR-0312	1200x300 mm typ SMR	TSR-ESD-0312
Rear panel TSR-0315	1500x300 mm typ SMR	TSR-ESD-0315
Rear panel TSR-0318	1800x300 mm typ SMR	TSR-ESD-0318

Perforated rear panel



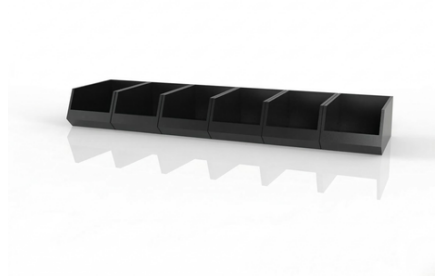
Element	Description	Code
Perforated panel 380-1180	1180x380 mm	KW-ESD-1180-380
Perforated panel 380-1480	1480x380 mm	KW-ESD-1480-380
Perforated panel 380-1780	1780x380 mm	KW-ESD-1780-380
Perforated panel 532-1180	1180x532 mm	KW-ESD-1180-532
Perforated panel 532-1480	1480x532 mm	KW-ESD-1480-532
Perforated panel 532-1780	1780x532 mm	KW-ESD-1780-532

Containers and bins

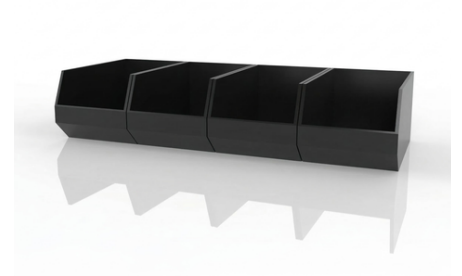
6 small R1 bins



6 medium R2 bins



4 large R3 bins



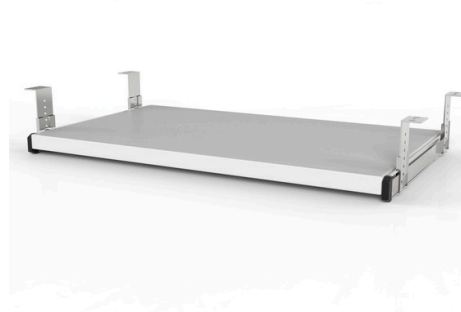
Element	Description	Code
Set of small R1 bins	6 pcs + rail	R1-ESD
Set of medium R2 bins	6 pcs + rail	R2-ESD
Set of large R3 bins	4 pcs + rail	R3-ESD

Lower (under-bench) accessories

Computer shelf PKOM



Keyboard drawer SK



Element	Description	Code
PKOM computer shelf	300 mm	PKOM-ESD-03

Element	Description	Code
SK keyboard drawer	700x350 mm	SK-ESD-0307

Power strip LZA5



Element	Description	Code
LZA5 power strip	5 sockets	LZA5

Tool cabinets

Cabinet K with doors



Cabinet K1 (3 drawers)



Cabinet K2 (4 drawers)



Element	Description	Code
K1 cabinet	6 pcs + rail	R1-ESD
Set of medium R2 bins	6 pcs + rail	R2-ESD
Set of large R3 bins	4 pcs + rail	R3-ESD

ESD accessories for workbenches

ESD table mat 1200x600 mm



Light blue ESD mat, 1200x600 mm, with two 10 mm male snaps. Heat-resistant (ideal for soldering applications). Resistant to abrasion and chemicals. Supplied as a kit with a wrist strap with 4 mm male snap and grounding cord with 10 mm female snap.

ESD wrist strap with spiral cable



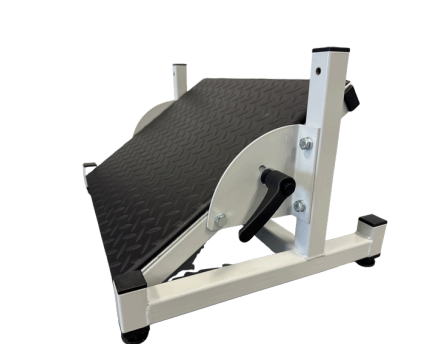
For personal grounding, can be connected to the mat or to a grounding module installed in the workbenches. Blue colour.

ESD anti-fatigue floor mat



Size 610x910x18 mm. Colour: black with yellow safety stripes on the sides. Ergonomic accessory that improves comfort during standing work.

ESD footrest



Durable footrest for JABAMA workbenches, manufactured in ESD version. Smooth tilt adjustment and stepwise height adjustment.



Chair L-1-ESD

Antistatic upholstered swivel chair (blue fabric) on a 5-star aluminium base, diameter 640 mm. Surface resistance 10^6 – 10^9 Ω . Seat size 480x440 mm. Backrest size 430x430 mm. Seat height adjustment 430–580 mm. Backrest angle and height adjustment. Conductive castors and metal discharge chain.

Optional adjustable armrests.



Chair ERGO-2-ESD

Antistatic upholstered swivel chair on a chrome-plated 5-star steel base, diameter 640 mm. Seat size 480x450 mm, backrest size 450x415 mm. Seat height adjustment 500–635 mm. Backrest height adjustment 90 mm, backrest tilt adjustment 20 degrees with multi-position lock. Gas lift class 4.

Antistatic castors. Optional armrests or chrome footring with height adjustment.



Chair PU-1-ESD

Antistatic swivel chair with polyurethane seat and backrest on a chrome-plated 5-star steel base, diameter 640 mm. Seat size 460x440 mm, backrest size 410x310 mm. Seat height adjustment 430–570 mm. Backrest height adjustment 85 mm. Seat depth adjustment 50 mm. Antistatic castors, diameter 50 mm.

Optional armrests or chrome footring with height adjustment.



ESD TRANSPORT TROLLEYS

Shelf trolleys

**Shelf trolley
WE/R-01-02-ESD**



**Shelf trolley
WE/R-01-03-ESD**



Option to install a grounding kit.



Dimensions 610x910x18 mm. Colour: black with yellow side stripes. An ergonomic accessory that improves comfort during standing work.

We use industrial antistatic castors, either fixed or swivel, with brakes.



Shelf trolley WE-01-05-ESD



Trolley type	Parameters
WE-01-02-ESD	2 shelves; 1000x500 mm top; 925x500 mm lower shelf; load capacity 200 kg; 125 mm castors
WER-01-02-ESD	2 shelves; 1000x500 mm top; 925x500 mm lower shelf; load capacity 200 kg; height adjustment 616–860 mm; 125 mm castors
WE-01-03-ESD	3 shelves; 1000x500 mm top; 925x500 mm lower shelves; load capacity 200 kg; 125 mm castor
WER-01-03-ESD	3 shelves; 1000x500 mm top; 925x500 mm lower shelves; load capacity 200 kg; height adjustment 621–865 mm; 125 mm castors
WE-01-05-ESD	5 shelves; 1000x700 mm top; 925x700 mm lower shelves; load capacity 300 kg; 125 mm castors



Beyond our standard trolleys, we also manufacture specialist ESD trolleys custom-designed to match specific production processes, making intralogistics both efficient and safe.

Tool trolleys

Tool trolley WN-02-ESD



Antistatic tool trolleys designed for use in EPA zones, equipped with tool cabinets K, K1 or K2. The large worktop allows the trolley to be used as a mobile workstation.

Trolley type	Parameters
WN-K-02-ESD	top 1200x550 mm; shelf 660x478 mm; cabinet K; load capacity 200 kg; 125 mm castors
WN-K1-02-ESD	top 1200x550 mm; shelf 660x478 mm; cabinet K1 (3 drawers); load capacity 200 kg; 125 mm castors
WN-K2-02-ESD	top 1200x550 mm; shelf 660x478 mm; cabinet K2 (4 drawers); load capacity 200 kg; 125 mm castors

Universal trolleys

Universal transport trolley WE-14663



Universal ESD transport trolley WE-14663 with perforated tool panels for mounting ESD bins (R1/R2/R3) or shelves and holders.

Trolley type	Parameters
WE-14663	1810x955x610 mm; 2x perforated panel; 125 mm castors

Mobile double-sided tool panel WE-14662



Mobile double-sided tool panel WE-14662 with A-frame structure, shelves and perforated panels, manufactured in ESD version.

Typ wózka	Parametry
WE-14662	1875x860x610 mm; 2x perforated panel; 125 mm castors; 2 shelves between the panels in the central section

Custom-designed solutions for EPA zones

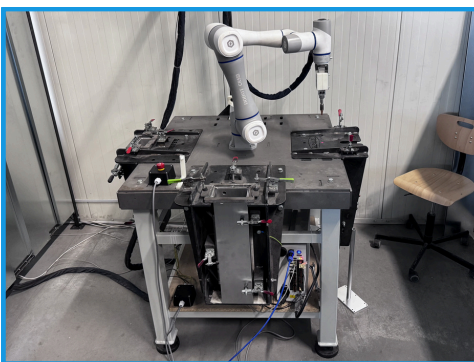


DO YOU NEED WORKSTATIONS OR TROLLEYS WITH NON-STANDARD DIMENSIONS, PARAMETERS OR EQUIPMENT? AS A MANUFACTURER, WE CAN DESIGN AND PRODUCE TAILOR-MADE INDUSTRIAL EQUIPMENT.

We have extensive experience in made-to-measure projects involving workbenches, transport trolleys, racking and other steel structures. We design customized workstations in which we can personalize:

- Table size and maximum load capacity
- Shape and size of the worktop, openings and cut-outs (e.g. for chutes or production machines)
- Additional equipment such as frames, guides and built-in cabinets
- Integration with trolleys, conveyors and production lines

This makes it possible to integrate workstations with processes in a given factory or warehouse, which speeds up operations and improves working comfort.



Gallery of example solutions



Gallery of example solutions



Gallery of example solutions



THANK YOU!

Please send your enquiries about our products to:

marketing@jabama.pl

Visit our website:



Jabama Polska sp. z o.o.
ul. Lawendowa 75, Chrośła
05-311 Chrośła, Polska
KRS: 0000875584
VAT: PL8222384494
REGON: 387782592



JABAMA wyposażenie
zakładów, meble ESD -
producent | LinkedIn



www.jabama.eu



JABAMA